

QWIK CAPS



TECHNICAL DATA

DESCRIPTION:

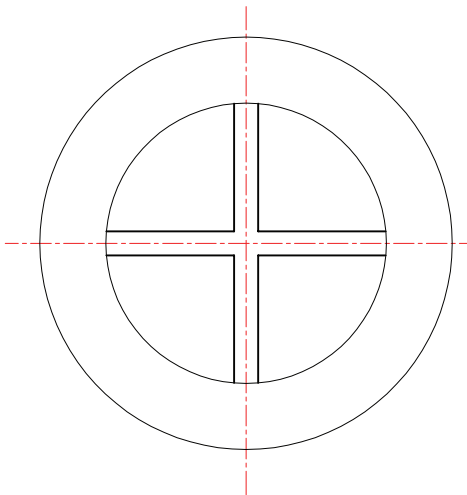
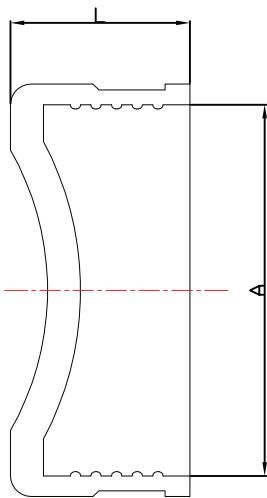
- Fast, easy installation
- Suitable for above or below ground use as an permanent solution to cap pipe ends, test pipes and cleanouts
- Low cost and reusable
- Fits 1.5" plastic, cast iron, copper, steel

PART#
QC-112

DESCRIPTION
1 1/2" QWIK CAP

Country of origin: China

ROUGH IN DRAWING



Model No.	Discription	A	L
QC-112	1 1/2 RUBBER TEST CAP	48	37
QC-2	2 RUBBER TEST CAP	60	37
QC-3	3 RUBBER TEST CAP	88	38
QC-4	4 RUBBER TEST CAP	114	38
QC-6	6 RUBBER TEST CAP	170	56
QC-8	8 RUBBER TEST CAP	220	74

ALL DIMENSIONS SHOWN ARE NOMINAL